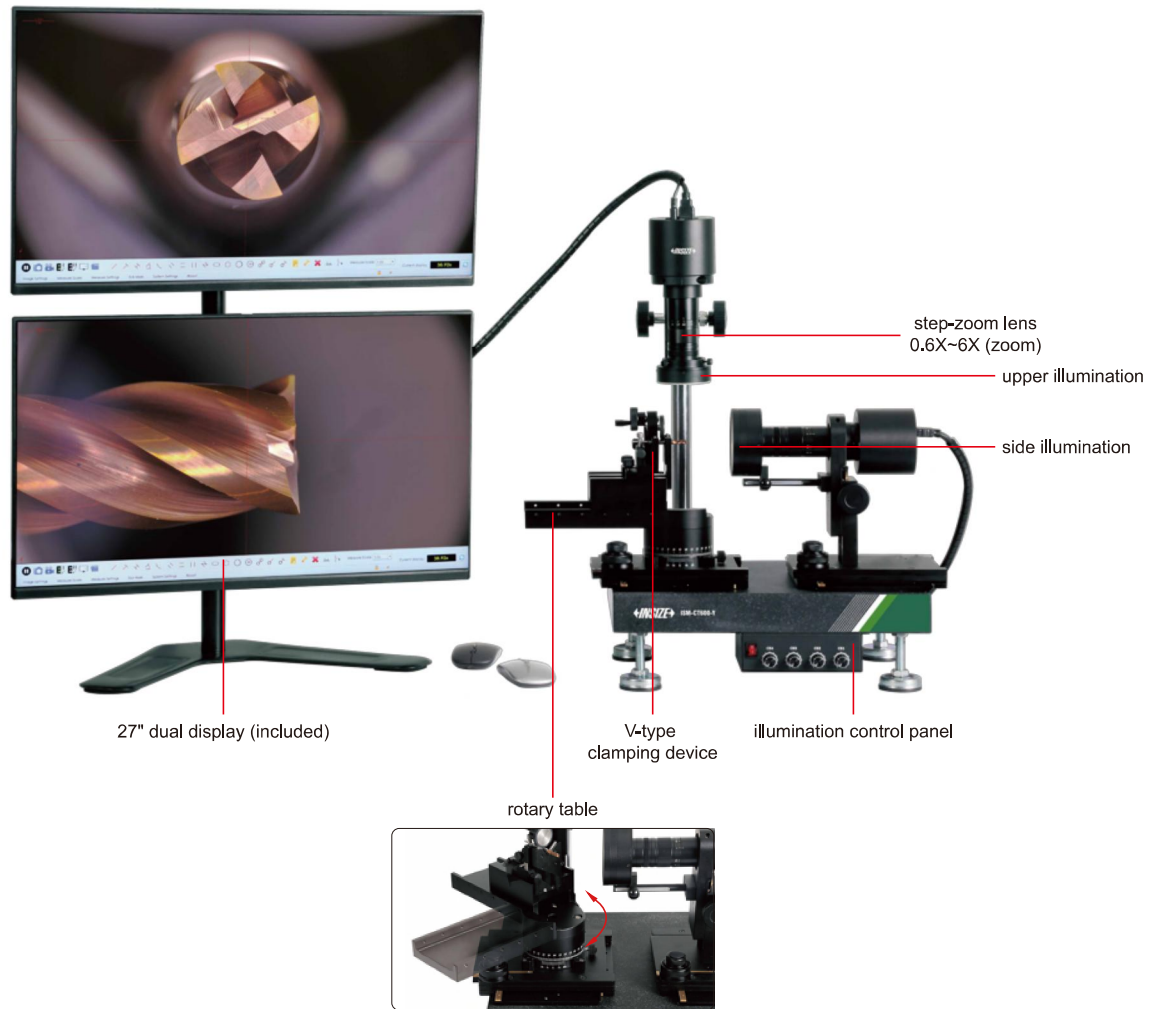


DUAL-DISPLAY CUTTING TOOLS MICROSCOPE CODE ISM-CT600

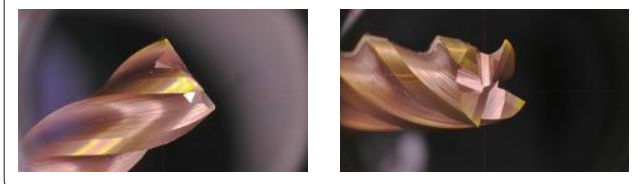
MULTI-ANGLE
OBSERVATION

4K

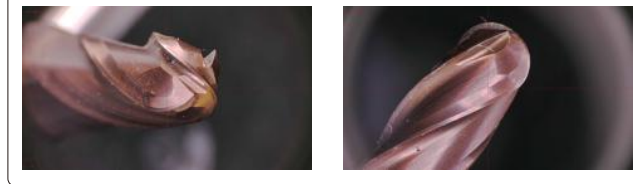
- 27" dual display, 4K high-definition image
- With a rotary slide table for multi-angle tool observation
- Display cross hairs
- Measure point, line, circle, parallel lines, angle, etc
- Take pictures and videos, saved to USB flash disk



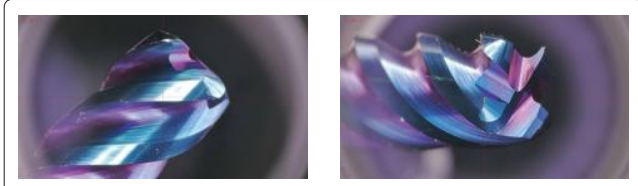
Multi-angle observation of various cutting tools



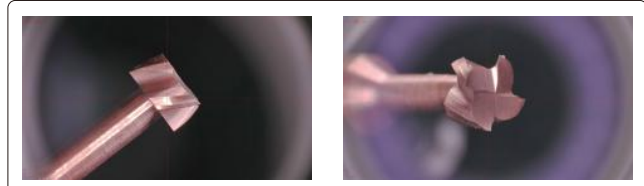
milling cutter



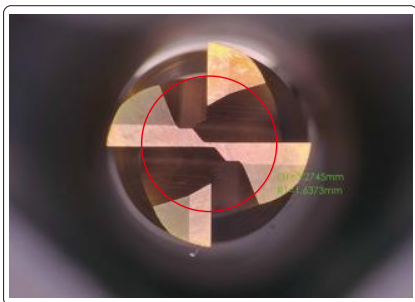
ball cutter



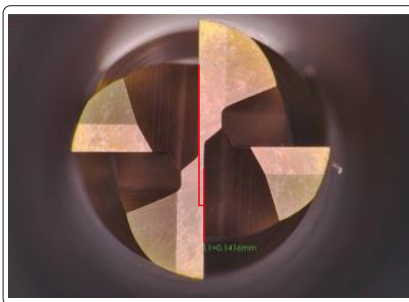
round-nose cutter



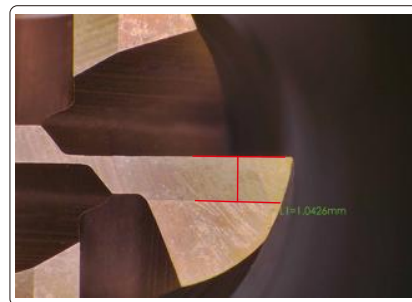
slot milling cutter



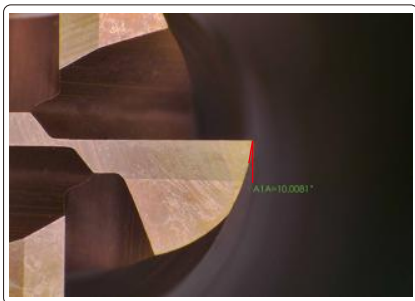
core thickness



center height deviation



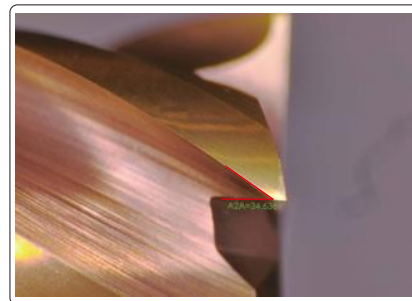
rear blade width



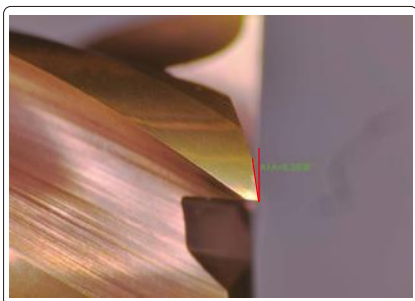
the first rear corner of peripheral flute



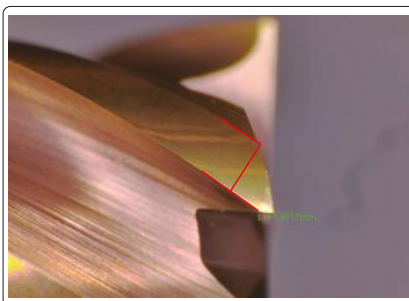
the second rear corner of peripheral flute



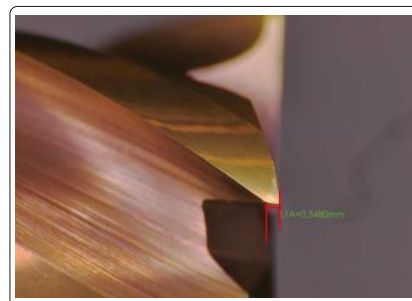
helix angle



the first rear corner of face cutter



the width of first rear corner of peripheral flute



the front corner of face cutter

SPECIFICATION

Cutting tools range	Ø3~20mm, length 20~60mm
Lens	step-zoom lens (0.6X~6X)*
Resolution	3840×2160
View field	1.4×2.5~14×25mm
Focus distance	80mm
Magnification	23X~230X (on 27" monitor)
Measuring accuracy	±0.02mm
Output	HDMI/USB
Rotary table	sliding distance: 90mm, rotation range: 0~220°
Power supply	100~240V, 50/60Hz
Dimension (L×W×H)	1150×400×880mm
Net Weight	43kg

*When lens magnification is 0.6X~1X, measurement is not recommended

STANDARD DELIVERY

Main unit	1pc
Display	2pcs
Mouse	2pcs
Glass calibration plate	1pc
HDMI cable	2pcs